

\$369,500 - 14443 107a Avenue, Edmonton

MLS® #E4458026

\$369,500

4 Bedroom, 1.00 Bathroom, 1,024 sqft
Single Family on 0.00 Acres

McQueen, Edmonton, AB

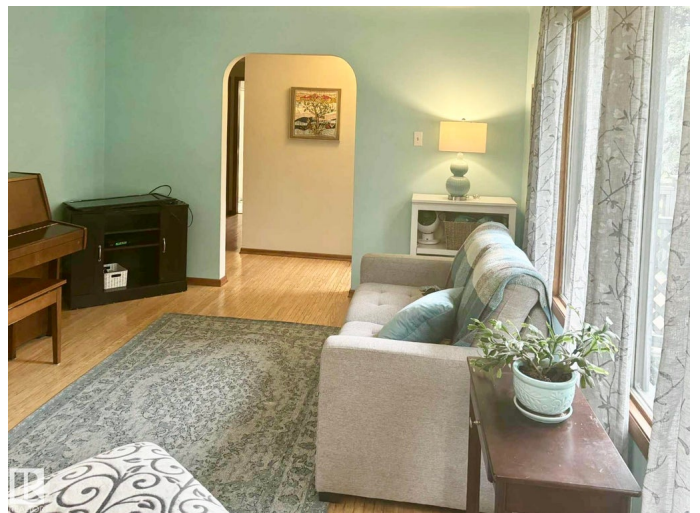
This lovely 1025 sq ft bungalow sits on a lovely tree-lined street in the mature & highly sought after neighbourhood of McQueen. The main floor offers 2 large bedrooms, 4 piece bath, Large L-shaped Living Room / Dining Room & a Den/Hobby room just off the spacious Kitchen. You'll also enjoy the original character of coved ceilings & Hardwood floors.

Basement has separate entrance ready for Nanny suite with 2 roughed-in bedrooms (that will be ready by October 16th), rec room, and kitchen. Utility/laundry plus lots of storage space. Outside is a Huge Deck & Oversized Single Car Garage. Plus Parking for RV & 3 other parking vehicles. Located just 2 Blocks from a Great Playground & a Thriving Community Centre with Ice Rink, Tennis & Volleyball court. Close to transportation, schools, shopping (Westmount Mall), Downtown.

Built in 1955

Essential Information

| | |
|----------------|-----------|
| MLS® # | E4458026 |
| Price | \$369,500 |
| Bedrooms | 4 |
| Bathrooms | 1.00 |
| Full Baths | 1 |
| Square Footage | 1,024 |



| | |
|------------|------------------------|
| Acres | 0.00 |
| Year Built | 1955 |
| Type | Single Family |
| Sub-Type | Detached Single Family |
| Style | Bungalow |
| Status | Active |

Community Information

| | |
|-------------|-------------------|
| Address | 14443 107a Avenue |
| Area | Edmonton |
| Subdivision | McQueen |
| City | Edmonton |
| County | ALBERTA |
| Province | AB |
| Postal Code | T5N 1G3 |

Amenities

| | |
|----------------|------------------------|
| Amenities | Deck, R.V. Storage |
| Parking Spaces | 5 |
| Parking | Single Garage Detached |

Interior

| | |
|--------------|---------------------------|
| Appliances | None |
| Heating | Forced Air-1, Natural Gas |
| Stories | 2 |
| Has Basement | Yes |
| Basement | Full, Partially Finished |

Exterior

| | |
|-------------------|--|
| Exterior | Wood, Stucco |
| Exterior Features | Back Lane, Fenced, Landscaped, Playground Nearby, Public Transportation, Schools, Shopping Nearby, Treed Lot |
| Roof | Asphalt Shingles |
| Construction | Wood, Stucco |
| Foundation | Concrete Perimeter |

Additional Information

| | |
|----------------|----------------------|
| Date Listed | September 16th, 2025 |
| Days on Market | 50 |

Zoning

Zone 21

DATA IS DEEMED RELIABLE BUT IS NOT GUARANTEED ACCURATE BY THE REALTORS® ASSOCIATION OF EDMONTON. COPYRIGHT 2025 BY THE REALTORS® ASSOCIATION OF EDMONTON. ALL RIGHTS RESERVED. Trademarks are owned or controlled by the Canadian Real Estate Association (CREA) and identify real estate professionals who are members of CREA (REALTOR®, REALTORS®) and/or the quality of services they provide (MLS®, Multiple Listing Service®)

Listing information last updated on November 5th, 2025 at 4:47am MST