

\$299,900 - 296 Knottwood North Road, Edmonton

MLS® #E4446870

\$299,900

3 Bedroom, 2.00 Bathroom, 751 sqft

Single Family on 0.00 Acres

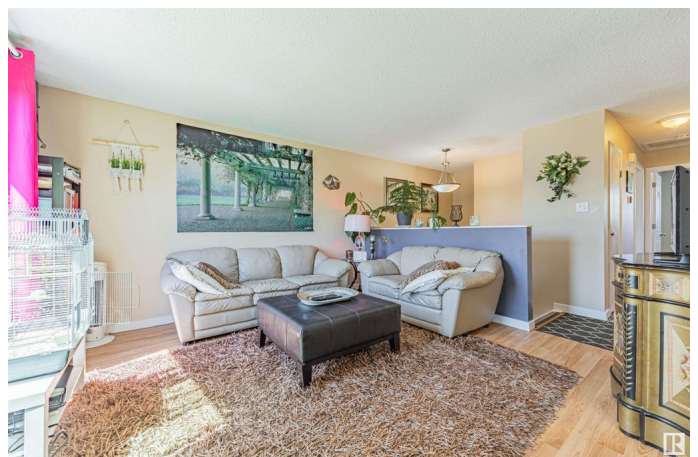
Satoo, Edmonton, AB

NO CONDO fees! This BEAUTIFUL Bi-level half duplex home located on Knottwood Rd North it's full of large windows providing southern exposure with lots of light creating a bright and spacious home with 3 bedrooms in total, 2 full baths and a fully finished basement. Enjoy the outdoors with a massive backyard that is fully fenced, landscaped and full of sunshine for your choice of garden ready to go. Complete with 2 sheds, ample parking and even space for a garage in the future. This home has been well maintained and updated through the years. There is RV parking in the rear of the home and plenty of space for family gatherings and a fire pit.

Built in 1975

Essential Information

| | |
|----------------|---------------|
| MLS® # | E4446870 |
| Price | \$299,900 |
| Bedrooms | 3 |
| Bathrooms | 2.00 |
| Full Baths | 2 |
| Square Footage | 751 |
| Acres | 0.00 |
| Year Built | 1975 |
| Type | Single Family |
| Sub-Type | Half Duplex |



| | |
|--------|----------|
| Style | Bi-Level |
| Status | Active |

Community Information

| | |
|-------------|--------------------------|
| Address | 296 Knottwood North Road |
| Area | Edmonton |
| Subdivision | Satoo |
| City | Edmonton |
| County | ALBERTA |
| Province | AB |
| Postal Code | T6K 1Y5 |

Amenities

| | |
|----------------|------------------------------------------------------|
| Amenities | No Smoking Home, R.V. Storage, Vinyl Windows |
| Parking Spaces | 2 |
| Parking | 2 Outdoor Stalls, No Garage, RV Parking, See Remarks |

Interior

| | |
|--------------|---------------------------------------------|
| Appliances | Dryer, Refrigerator, Stove-Electric, Washer |
| Heating | Forced Air-1, Natural Gas |
| Stories | 2 |
| Has Basement | Yes |
| Basement | Full, Finished |

Exterior

| | |
|-------------------|-----------------------------------------------------------------|
| Exterior | Wood, Stucco |
| Exterior Features | Fenced, Landscaped, Playground Nearby, Schools, Shopping Nearby |
| Roof | Asphalt Shingles |
| Construction | Wood, Stucco |
| Foundation | Concrete Perimeter |

Additional Information

| | |
|----------------|-----------------|
| Date Listed | July 10th, 2025 |
| Days on Market | 2 |
| Zoning | Zone 29 |

DATA IS DEEMED RELIABLE BUT IS NOT GUARANTEED ACCURATE BY THE REALTORS® ASSOCIATION OF EDMONTON. COPYRIGHT 2025 BY THE REALTORS® ASSOCIATION OF EDMONTON. ALL RIGHTS RESERVED. Trademarks are owned or controlled by the Canadian Real Estate Association (CREA) and identify real estate professionals who are members of CREA (REALTOR®, REALTORS®) and/or the quality of services they provide (MLS®, Multiple Listing Service®)

Listing information last updated on July 12th, 2025 at 4:17pm MDT