

\$899,900 - 186 Willow Way, Edmonton

MLS® #E4446774

\$899,900

6 Bedroom, 2.00 Bathroom, 3,194 sqft

Single Family on 0.00 Acres

Westridge (Edmonton), Edmonton, AB

Discover the potential of this custom built "original owner" residence in a terrific Westridge location. It features 5 upper bedrooms and a huge bonus room with dormers and access to a south facing deck. (it could also be a bedroom). The main floor includes formal living and dining rooms, a spacious kitchen and breakfast nook, a 2 pce guest bath, the laundry and the family room with a woodburning fireplace with access to the deck. There are two stairwells leading upstairs and a handy second front entry. The basement is fully finished with a games room, rec room, a second family room, and plenty of storage. There is an oversized heated garage(approx 25'5" x 22'7") with a drain and an adjacent concrete(6 inch)14' x 32' parking pad ideal for a 28' motorhome. The mature grounds include a greenhouse , garden areas and two storage sheds. Close to the River Valley, Trails and the many amenities of the West end it's a must to consider! Immediate possession available.

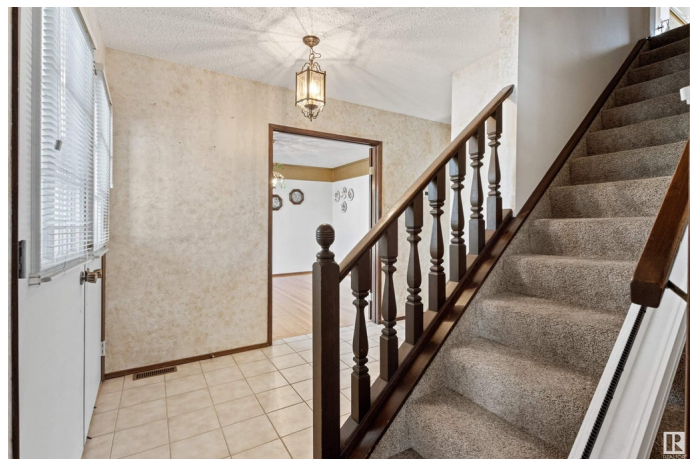
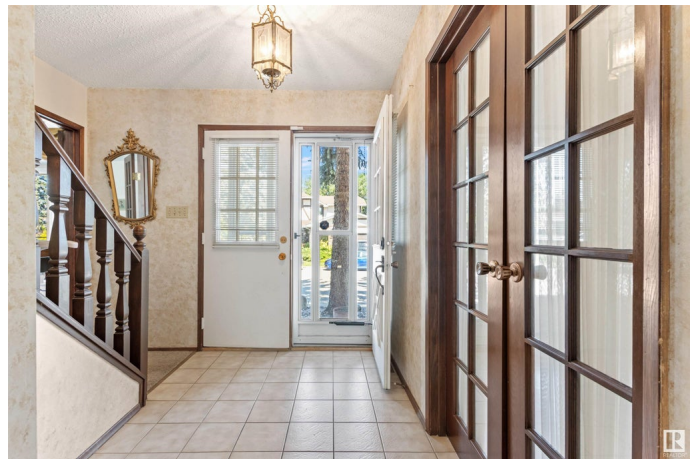
Built in 1976

Essential Information

MLS® # E4446774

Price \$899,900

Bedrooms 6



Bathrooms	2.00
Full Baths	1
Half Baths	2
Square Footage	3,194
Acres	0.00
Year Built	1976
Type	Single Family
Sub-Type	Detached Single Family
Style	2 Storey
Status	Active

Community Information

Address	186 Willow Way
Area	Edmonton
Subdivision	Westridge (Edmonton)
City	Edmonton
County	ALBERTA
Province	AB
Postal Code	T5T 1C8

Amenities

Amenities	Patio
Parking Spaces	5
Parking	Double Garage Attached

Interior

Interior Features	ensuite bathroom
Appliances	Dishwasher-Built-In, Dryer, Garage Control, Garage Opener, Hood Fan, Refrigerator, Storage Shed, Stove-Electric, Vacuum System Attachments, Vacuum Systems, Washer, Window Coverings, TV Wall Mount, Garage Heater
Heating	Forced Air-2, Natural Gas
Fireplace	Yes
Fireplaces	Brick Facing
Stories	3
Has Basement	Yes
Basement	Full, Finished

Exterior

Exterior	Wood, Brick, Stucco
Exterior Features	Corner Lot, Fenced, Flat Site, Golf Nearby, Public Transportation, Schools, Shopping Nearby
Roof	Asphalt Shingles
Construction	Wood, Brick, Stucco
Foundation	Concrete Perimeter

School Information

Elementary	Patricia Heights
Middle	Hillcrest
High	Jasper Place Composite

Additional Information

Date Listed	July 7th, 2025
Days on Market	5
Zoning	Zone 22

DATA IS DEEMED RELIABLE BUT IS NOT GUARANTEED ACCURATE BY THE REALTORS® ASSOCIATION OF EDMONTON. COPYRIGHT 2025 BY THE REALTORS® ASSOCIATION OF EDMONTON. ALL RIGHTS RESERVED. Trademarks are owned or controlled by the Canadian Real Estate Association (CREA) and identify real estate professionals who are members of CREA (REALTOR®, REALTORS®) and/or the quality of services they provide (MLS®, Multiple Listing Service®)

Listing information last updated on July 12th, 2025 at 8:32am MDT