

\$679,900 - 7207 182 Avenue, Edmonton

MLS® #E4445173

\$679,900

4 Bedroom, 3.00 Bathroom, 2,554 sqft
Single Family on 0.00 Acres

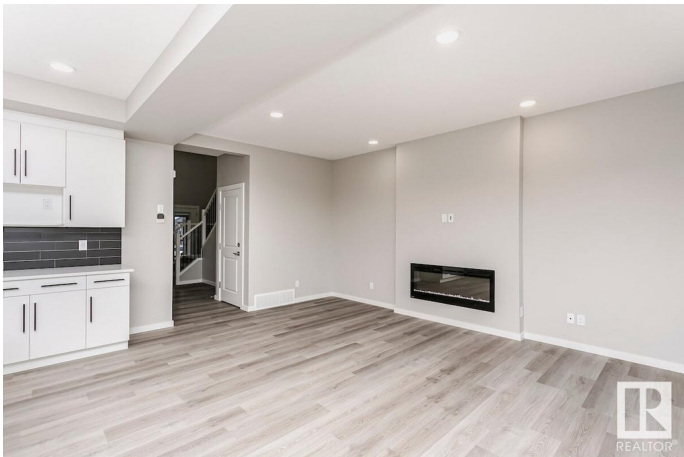
Crystallina Nera East, Edmonton, AB

4 Bedrooms, 3 Full Bathrooms: Spacious layout, including a main floor bedroom with a full bath, perfect for guests. Front Attached Double Car Garage: Provides convenient parking and additional storage space. Backs Onto Future Park and School: Ideal for families, with easy access to green spaces and a future school. Open Concept Main Floor: Large kitchen, dining, and great room area for modern family living. Large Kitchen Island: Ideal for meal prep, serving, and entertaining. Walkthrough mudroom and pantry: Convenient access from the garage to the kitchen, perfect for unloading groceries. 9' Basement Foundation Walls: Ready for potential future development Separate entrance to the basement 50" Linear Ortech LED Electric Fireplace: Adds a modern and cozy touch to the living room.

Built in 2024

Essential Information

| | |
|----------------|-----------|
| MLS® # | E4445173 |
| Price | \$679,900 |
| Bedrooms | 4 |
| Bathrooms | 3.00 |
| Full Baths | 3 |
| Square Footage | 2,554 |
| Acres | 0.00 |



| | |
|------------|------------------------|
| Year Built | 2024 |
| Type | Single Family |
| Sub-Type | Detached Single Family |
| Style | 2 Storey |
| Status | Active |

Community Information

| | |
|-------------|-----------------------|
| Address | 7207 182 Avenue |
| Area | Edmonton |
| Subdivision | Crystallina Nera East |
| City | Edmonton |
| County | ALBERTA |
| Province | AB |
| Postal Code | T5Z 0J1 |

Amenities

| | |
|----------------|---|
| Amenities | Ceiling 9 ft., Closet Organizers, Storage-In-Suite, See Remarks |
| Parking Spaces | 4 |
| Parking | Double Garage Attached |

Interior

| | |
|-------------------|---------------------------|
| Interior Features | ensuite bathroom |
| Appliances | None |
| Heating | Forced Air-1, Natural Gas |
| Fireplace | Yes |
| Fireplaces | Insert |
| Stories | 2 |
| Has Basement | Yes |
| Basement | Full, Unfinished |

Exterior

| | |
|-------------------|---|
| Exterior | Wood, Stone, Vinyl, Hardie Board Siding |
| Exterior Features | Backs Onto Park/Trees, Park/Reserve, Playground Nearby, Schools |
| Roof | Asphalt Shingles |
| Construction | Wood, Stone, Vinyl, Hardie Board Siding |
| Foundation | Concrete Perimeter |

Additional Information

| | |
|-------------|----------------|
| Date Listed | July 1st, 2025 |
|-------------|----------------|

Days on Market 8

Zoning Zone 28

DATA IS DEEMED RELIABLE BUT IS NOT GUARANTEED ACCURATE BY THE REALTORS® ASSOCIATION OF EDMONTON. COPYRIGHT 2025 BY THE REALTORS® ASSOCIATION OF EDMONTON. ALL RIGHTS RESERVED. Trademarks are owned or controlled by the Canadian Real Estate Association (CREA) and identify real estate professionals who are members of CREA (REALTOR®, REALTORS®) and/or the quality of services they provide (MLS®, Multiple Listing Service®)

Listing information last updated on July 9th, 2025 at 10:33am MDT