

\$399,695 - 3107 14 Avenue, Edmonton

MLS® #E4445018

\$399,695

3 Bedroom, 2.50 Bathroom, 1,291 sqft

Single Family on 0.00 Acres

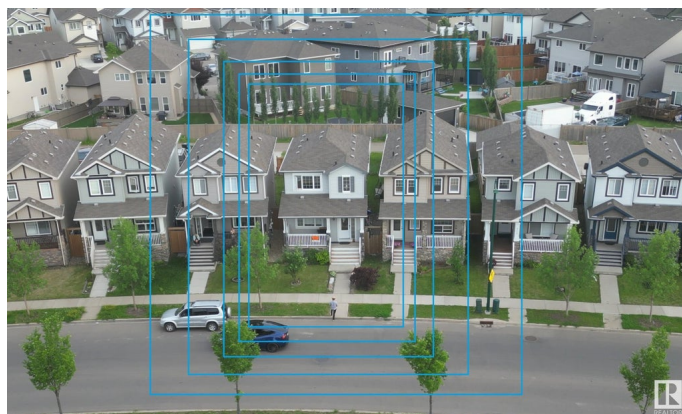
Laurel, Edmonton, AB

In 2015 Pacesetter Homes Completed Construction of this Lovely 2 Storey 3 Bedroom 2 bath Home Right in the Heart of the Laurel Community. The granite countertops, stainless steel appliances and hardwood floor can be appreciated from any angle in this open concept layout. The Un-finished basement is clean and ready for your vision of the space. The concrete Garage Pad is clean and ready to park your vehicles. This home is walking distance to Laurel Crossing Park. Home is ready to move in right away.

Built in 2015

Essential Information

MLS® #	E4445018
Price	\$399,695
Bedrooms	3
Bathrooms	2.50
Full Baths	2
Half Baths	1
Square Footage	1,291
Acres	0.00
Year Built	2015
Type	Single Family
Sub-Type	Detached Single Family
Style	2 Storey



StatusActive

Community Information

Address3107 14 Avenue
AreaEdmonton
SubdivisionLaurel
CityEdmonton
CountyALBERTA
ProvinceAB
Postal CodeT6T 0Z2

Amenities

AmenitiesDeck, Detectors Smoke
Parking2 Outdoor Stalls

Interior

Interior Featuresensuite bathroom
AppliancesDishwasher-Built-In, Dryer, Refrigerator, Stove-Electric, Washer
HeatingForced Air-1, Natural Gas
Stories2
Has BasementYes
BasementFull, Unfinished

Exterior

ExteriorWood, Vinyl
Exterior FeaturesPlayground Nearby
RoofAsphalt Shingles
ConstructionWood, Vinyl
FoundationConcrete Perimeter

Additional Information

Date ListedJune 29th, 2025
Days on Market10
ZoningZone 30

DATA IS DEEMED RELIABLE BUT IS NOT GUARANTEED ACCURATE BY THE REALTORS® ASSOCIATION OF EDMONTON. COPYRIGHT 2025 BY THE REALTORS® ASSOCIATION OF EDMONTON. ALL RIGHTS RESERVED.Trademarks are owned or controlled by the Canadian Real Estate Association (CREA) and identify real estate professionals who are members of CREA (REALTOR®, REALTORS®) and/or the quality of services they provide (MLS®, Multiple Listing Service®)
Listing information last updated on July 9th, 2025 at 12:47am MDT