

\$379,000 - 1 Nordal Close, Wetaskiwin

MLS® #E4443951

\$379,000

3 Bedroom, 3.00 Bathroom, 1,225 sqft

Single Family on 0.00 Acres

Aspen Ridge (Wetaskiwin), Wetaskiwin, AB

LUXURIOUS ADULT LIVING â€™ WITHOUT THE FEES! This beautifully maintained 3-bedroom bungalow style half duplex offers the perfect blend of comfort and convenience. Step into the bright, open-concept living space featuring vaulted ceilings and a spacious kitchen, dining and living room. The main floor also boasts a spacious office/den with beautiful bay window, main floor laundry, a 4 piece family bath and a huge primary suite complete with double closets and a 4-piece ensuite. A cozy sunroom leads to the landscaped back yard featuring fruit trees, a small garden and a nice sized storage shed. The fully finished basement includes two additional bedrooms and a 3-piece bath, offering plenty of space for guests or hobbies. Recent updates include a newer hot water tank (approx. 2 years), A/C, and a rebuilt furnace (Dec 2024). A turn-key home in a prime locationâ€™this is adult living at its best!

Built in 2006

Essential Information

MLS® #	E4443951
Price	\$379,000
Bedrooms	3
Bathrooms	3.00
Full Baths	3



Square Footage	1,225
Acres	0.00
Year Built	2006
Type	Single Family
Sub-Type	Half Duplex
Style	Bungalow
Status	Active

Community Information

Address	1 Nordal Close
Area	Wetaskiwin
Subdivision	Aspen Ridge (Wetaskiwin)
City	Wetaskiwin
County	ALBERTA
Province	AB
Postal Code	T9A 0P1

Amenities

Amenities	Air Conditioner, Sunroom, Vaulted Ceiling
Parking	Double Garage Attached, Front Drive Access, Heated, Insulated

Interior

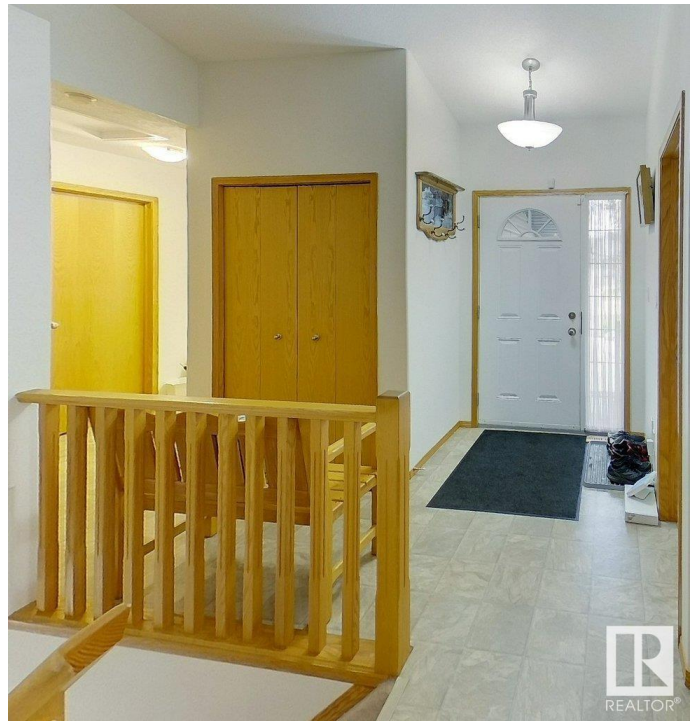
Interior Features	ensuite bathroom
Appliances	Air Conditioning-Central, Dishwasher-Built-In, Dryer, Garage Control, Garage Opener, Microwave Hood Fan, Refrigerator, Storage Shed, Stove-Electric, Washer, Window Coverings, See Remarks
Heating	Forced Air-1, Natural Gas
Stories	2
Has Basement	Yes
Basement	Full, Finished

Exterior

Exterior	Wood, Brick, Vinyl
Exterior Features	Corner Lot, Cul-De-Sac, Fenced, Fruit Trees/Shrubs, Golf Nearby, Landscaped, Playground Nearby, Public Swimming Pool, Vegetable Garden
Roof	Asphalt Shingles
Construction	Wood, Brick, Vinyl
Foundation	Concrete Perimeter

Additional Information

Date Listed June 23rd, 2025
Days on Market 10
Zoning Zone 80



DATA IS DEEMED RELIABLE BUT IS NOT GUARANTEED ACCURATE BY THE REALTORS® ASSOCIATION OF EDMONTON. COPYRIGHT 2025 BY THE REALTORS® ASSOCIATION OF EDMONTON. ALL RIGHTS RESERVED. Trademarks are owned or controlled by the Canadian Real Estate Association (CREA) and identify real estate professionals who are members of CREA (REALTOR®, REALTORS®) and/or the quality of services they provide (MLS®, Multiple Listing Service®)

Listing information last updated on July 2nd, 2025 at 11:03pm MDT