

\$549,900 - 2904 33a Street, Edmonton

MLS® #E4440072

\$549,900

4 Bedroom, 3.00 Bathroom, 1,705 sqft

Single Family on 0.00 Acres

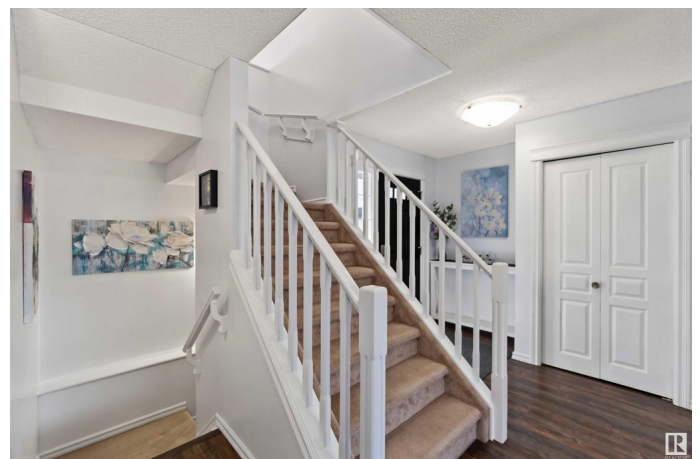
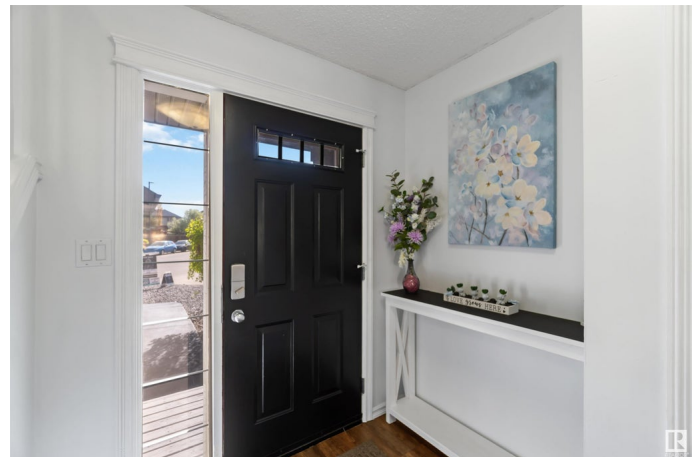
Silver Berry, Edmonton, AB

This beautifully maintained 4 bedroom, 3 bathroom home offers over 2,300 sq ft of well designed living space, with luxury vinyl plank flooring throughout. The kitchen features a massive island and a walk-in pantry, while the generous living room boasts a gas fireplace—perfect for relaxing evenings.. Recent updates include a new hot water tank, appliance replacements, and a newer roof. The heated double attached garage is next level with custom LED lights & epoxy flooring. The fully finished basement adds valuable extra living space for a recreation room, home office, or guest area. Step outside to a breathtaking, oversized reverse pie lot with a stunning 3-tier cedar deck—ideal for hosting. The spacious backyard provides endless possibilities for gardening, play areas, or outdoor gatherings. Located in family-friendly Silver Berry with easy access to Whitemud Drive, Anthony Henday, schools, parks, transit, and shopping. All this home needs is YOU!

Built in 2002

Essential Information

MLS® #	E4440072
Price	\$549,900
Bedrooms	4
Bathrooms	3.00



Full Baths	3
Square Footage	1,705
Acres	0.00
Year Built	2002
Type	Single Family
Sub-Type	Detached Single Family
Style	2 Storey
Status	Active

Community Information

Address	2904 33a Street
Area	Edmonton
Subdivision	Silver Berry
City	Edmonton
County	ALBERTA
Province	AB
Postal Code	T6T 1V5

Amenities

Amenities	Deck, Detectors Smoke
Parking Spaces	4
Parking	Double Garage Attached

Interior

Interior Features	ensuite bathroom
Appliances	Dishwasher-Built-In, Dryer, Garage Control, Garage Opener, Hood Fan, Refrigerator, Stove-Electric, Washer, Window Coverings
Heating	Forced Air-1, Natural Gas
Fireplace	Yes
Fireplaces	Mantel, Tile Surround
Stories	3
Has Basement	Yes
Basement	Full, Finished

Exterior

Exterior	Wood, Vinyl
Exterior Features	Fenced, Flat Site, Landscaped, Park/Reserve, Public Transportation, Schools, Shopping Nearby
Roof	Asphalt Shingles

Construction	Wood, Vinyl
Foundation	Concrete Perimeter

School Information

Elementary	Bisset School
Middle	Kate Chegwin School
High	Francis Whiskeyjack School

Additional Information

Date Listed	June 3rd, 2025
Days on Market	14
Zoning	Zone 30

DATA IS DEEMED RELIABLE BUT IS NOT GUARANTEED ACCURATE BY THE REALTORS® ASSOCIATION OF EDMONTON. COPYRIGHT 2025 BY THE REALTORS® ASSOCIATION OF EDMONTON. ALL RIGHTS RESERVED.Trademarks are owned or controlled by the Canadian Real Estate Association (CREA) and identify real estate professionals who are members of CREA (REALTOR®, REALTORS®) and/or the quality of services they provide (MLS®, Multiple Listing Service®)

Listing information last updated on June 17th, 2025 at 12:02am MDT