

\$220,000 - 134 10121 80 Avenue, Edmonton

MLS® #E4437733

\$220,000

1 Bedroom, 1.00 Bathroom, 763 sqft

Condo / Townhouse on 0.00 Acres

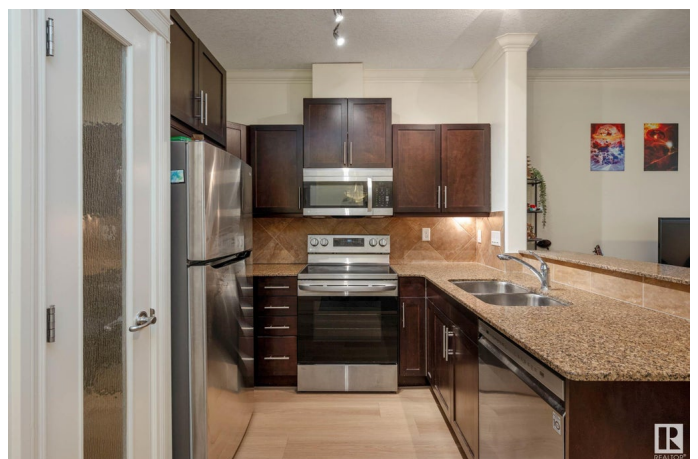
Ritchie, Edmonton, AB

Discover your perfect urban oasis at Scona Gardens! Just minutes from Whyte Avenue, Farmers Market, and vibrant social scenes, this luxury condo is a must-see. Featuring 1 bedroom w/walkthrough closet plus a versatile den, soaring 9'™ ceilings, and in-suite laundry for convenience. The stylish kitchen boasts mocha cabinets, crown molding, a raised eating bar, and stunning granite countertops. Relax in the spacious family room with tall windows, an electric fireplace, and a balcony with a NG hookup—ideal for BBQs. The unit showcases African teak laminate flooring, and ceramic tiles, keep cool in the summer with a newer Central A/C unit. Building amenities include a car wash bay, underground parking for residents and guests, a fitness room, and guest suite. Plus, a titled parking stall is included for your ease. Located close to transit, the university, and downtown, this gem offers modern comfort with an unbeatable location. Pet friendly building!

Built in 2006

Essential Information

MLS® #	E4437733
Price	\$220,000
Bedrooms	1
Bathrooms	1.00



Full Baths	1
Square Footage	763
Acres	0.00
Year Built	2006
Type	Condo / Townhouse
Sub-Type	Lowrise Apartment
Style	Single Level Apartment
Status	Active

Community Information

Address	134 10121 80 Avenue
Area	Edmonton
Subdivision	Ritchie
City	Edmonton
County	ALBERTA
Province	AB
Postal Code	T6E 0B9

Amenities

Amenities	Air Conditioner, Car Wash, Ceiling 9 ft., Intercom, No Animal Home, No Smoking Home, Parking-Visitor, Patio
Parking Spaces	1
Parking	Heated, Underground

Interior

Appliances	Air Conditioning-Central, Dishwasher-Built-In, Dryer, Microwave Hood Fan, Refrigerator, Stove-Electric, Washer
Heating	Fan Coil, Natural Gas
Fireplace	Yes
Fireplaces	Corner
# of Stories	4
Stories	1
Has Basement	Yes
Basement	None, No Basement

Exterior

Exterior	Wood, Stone, Vinyl
Exterior Features	Public Transportation, Schools, Shopping Nearby
Roof	Asphalt Shingles

Construction	Wood, Stone, Vinyl
Foundation	Concrete Perimeter

Additional Information

Date Listed	May 22nd, 2025
Days on Market	27
Zoning	Zone 17
Condo Fee	\$512

DATA IS DEEMED RELIABLE BUT IS NOT GUARANTEED ACCURATE BY THE REALTORS® ASSOCIATION OF EDMONTON. COPYRIGHT 2025 BY THE REALTORS® ASSOCIATION OF EDMONTON. ALL RIGHTS RESERVED.Trademarks are owned or controlled by the Canadian Real Estate Association (CREA) and identify real estate professionals who are members of CREA (REALTOR®, REALTORS®) and/or the quality of services they provide (MLS®, Multiple Listing Service®)

Listing information last updated on June 18th, 2025 at 6:47am MDT