

## \$199,900 - 128 15499 Castle Downs Road, Edmonton

MLS® #E4436053

**\$199,900**

2 Bedroom, 2.00 Bathroom, 1,166 sqft

Condo / Townhouse on 0.00 Acres

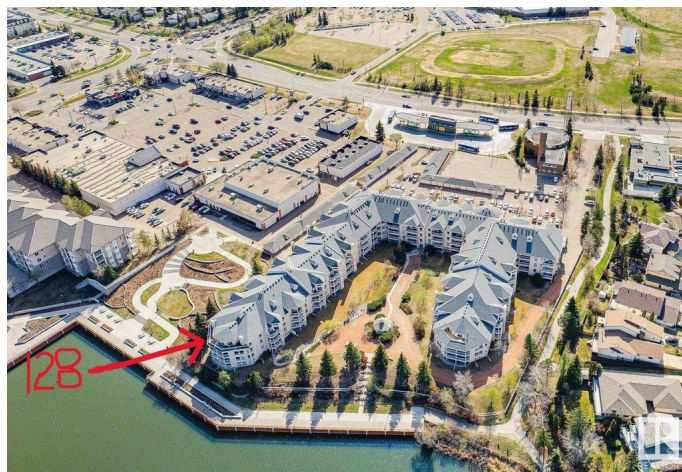
Beaumaris, Edmonton, AB

LAKEFRONT only steps away! Partial LAKE VIEW from your patio! 100 metres to gorgeous trail around Lake Beaumaris. Beside a public park overlooking the lake! Very quiet, private, yet secure grounds. 18+ adult living. Squeaky clean unit has brand-new luxury vinyl plank flooring & new 3-1/4" baseboards in the wide open living, dining, kitchen, office niche, entry areas + the main bath & laundry! Updates include; most lighting; oval door knobs, hinges, striker plates & doorstops; oval bi-fold knobs; kitchen pull down faucet & modern cabinet handles; virtually all brass removed! Gas fireplace; Building features a small swimming pool, exercise room, lounge area, active social club and small library; Sorry but unfortunately outdoor parking, no pets, & 3 steps in hallway to unit preventing wheelchair access!

Built in 1993

### Essential Information

MLS® #	E4436053
Price	\$199,900
Bedrooms	2
Bathrooms	2.00
Full Baths	2
Square Footage	1,166
Acres	0.00
Year Built	1993



Type	Condo / Townhouse
Sub-Type	Lowrise Apartment
Style	Single Level Apartment
Status	Active

### Community Information

Address	128 15499 Castle Downs Road
Area	Edmonton
Subdivision	Beaumaris
City	Edmonton
County	ALBERTA
Province	AB
Postal Code	T5K 5Y3

### Amenities

Amenities	Exercise Room, No Animal Home, No Smoking Home, Patio, Pool-Indoor, Recreation Room/Centre, Social Rooms
Parking Spaces	1
Parking	Stall
Is Waterfront	Yes
Has Pool	Yes

### Interior

Interior Features	ensuite bathroom
Appliances	Dishwasher-Built-In, Dryer, Hood Fan, Refrigerator, Stove-Electric, Washer, Window Coverings
Heating	Hot Water, Natural Gas
Fireplace	Yes
Fireplaces	Mantel, Tile Surround
# of Stories	4
Stories	1
Has Basement	Yes
Basement	None, No Basement

### Exterior

Exterior	Wood, Asphalt, Stucco
Exterior Features	Backs Onto Lake, Fenced, Lake Access Property, No Through Road, Treed Lot, View Lake
Roof	Asphalt Shingles

Construction	Wood, Asphalt, Stucco
Foundation	Concrete Perimeter

**Additional Information**

Date Listed	May 9th, 2025
Days on Market	29
Zoning	Zone 27
Condo Fee	\$569

DATA IS DEEMED RELIABLE BUT IS NOT GUARANTEED ACCURATE BY THE REALTORS® ASSOCIATION OF EDMONTON. COPYRIGHT 2025 BY THE REALTORS® ASSOCIATION OF EDMONTON. ALL RIGHTS RESERVED.Trademarks are owned or controlled by the Canadian Real Estate Association (CREA) and identify real estate professionals who are members of CREA (REALTOR®, REALTORS®) and/or the quality of services they provide (MLS®, Multiple Listing Service®)

Listing information last updated on June 7th, 2025 at 8:47pm MDT