

\$799,000 - 8724 92b Avenue, Edmonton

MLS® #E4435355

\$799,000

3 Bedroom, 4.00 Bathroom, 2,721 sqft

Single Family on 0.00 Acres

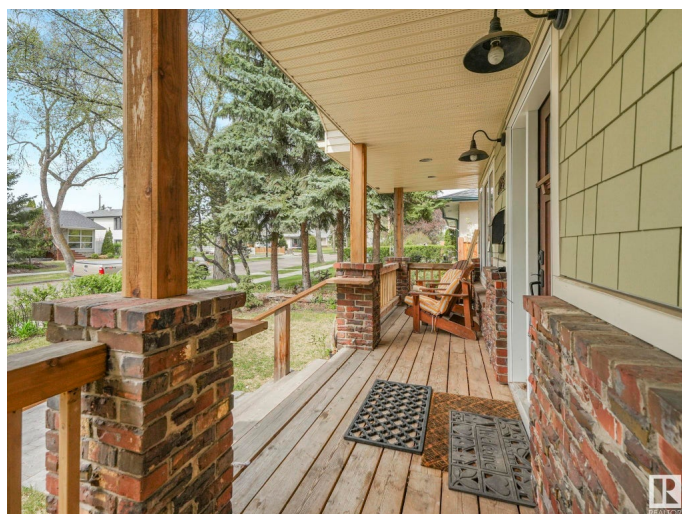
Strathearn, Edmonton, AB

Welcome to Strathearn! This stunning 2&half-storey home is located within minutes to the river valley, golf, amenities, cafes & restaurants & more! The completely renovated character home was redone in 2017 and retains so much old world charm. There's loads of room with 2721sq ft of finished living space – 3 large bedrooms on the second floor, main floor den(or bedroom) top floor bonus room, 4 baths, spacious kitchen, dining room, covered rear deck , double detached garage, extra concrete parking pad & more – all located on a quiet street. Throughout the home you will fall in love with the well-designed floor plan that maximizes every space. Some features include Front veranda,Hardie board siding, gas stove, hardwood floors, spray foam insulation, custom vanities, farm house sink, covered rear deck and more. Still with room to expand, by finishing the basement. No shortage of room in this delightful home.

Built in 1953

Essential Information

MLS® #	E4435355
Price	\$799,000
Bedrooms	3
Bathrooms	4.00



Full Baths	4
Square Footage	2,721
Acres	0.00
Year Built	1953
Type	Single Family
Sub-Type	Detached Single Family
Style	3 Storey
Status	Active

Community Information

Address	8724 92b Avenue
Area	Edmonton
Subdivision	Strathearn
City	Edmonton
County	ALBERTA
Province	AB
Postal Code	T6C 1S9

Amenities

Amenities	Closet Organizers, Deck, Front Porch, Insulation-Upgraded, No Smoking Home
Parking Spaces	2
Parking	Double Garage Detached

Interior

Interior Features	ensuite bathroom
Appliances	Dishwasher-Built-In, Dryer, Garage Opener, Hood Fan, Microwave Hood Fan, Refrigerator, Stove-Gas, Washer, Window Coverings
Heating	Forced Air-1, Natural Gas
Stories	3
Has Basement	Yes
Basement	Full, Unfinished

Exterior

Exterior	Wood, Fiber Cement
Exterior Features	Back Lane, Fenced, Golf Nearby, Landscaped, Playground Nearby, Public Transportation, Schools, Shopping Nearby, Ski Hill Nearby
Roof	Asphalt Shingles
Construction	Wood, Fiber Cement

Foundation Concrete Perimeter

Additional Information

Date Listed May 8th, 2025

Days on Market 47

Zoning Zone 18

DATA IS DEEMED RELIABLE BUT IS NOT GUARANTEED ACCURATE BY THE REALTORS® ASSOCIATION OF EDMONTON. COPYRIGHT 2025 BY THE REALTORS® ASSOCIATION OF EDMONTON. ALL RIGHTS RESERVED.Trademarks are owned or controlled by the Canadian Real Estate Association (CREA) and identify real estate professionals who are members of CREA (REALTOR®, REALTORS®) and/or the quality of services they provide (MLS®, Multiple Listing Service®)

Listing information last updated on June 24th, 2025 at 3:32am MDT