

\$699,900 - 9809/9811 89 Avenue, Edmonton

MLS® #E4433075

\$699,900

6 Bedroom, 3.50 Bathroom, 1,216 sqft

Single Family on 0.00 Acres

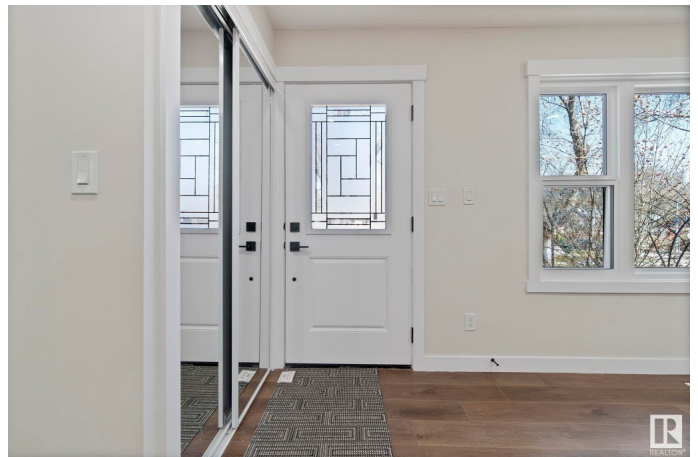
Strathcona, Edmonton, AB

AMAZING LOCATION AND HOME! Just 1 block to Mill Creek Ravine! This home features SIX BEDROOMS AND 4 BATHROOMS WITH 2 TOTALLY RENOVATED SUITES! Each home has 3 bedrooms, it's own kitchen, rec/living room, dining area, laundry and 2 bathrooms on each level. Live worry free with new windows, electrical (200 AMP panel), plumbing, kitchens, bathrooms, flooring, siding, evestrough, soffits and fascia! A generous sized garage has a lot space for TONS of extra storage space! MUST BE SEEN TO UNDERSTAND THE TRUE VALUE HERE!!

Built in 1956

Essential Information

| | |
|----------------|------------------------|
| MLS® # | E4433075 |
| Price | \$699,900 |
| Bedrooms | 6 |
| Bathrooms | 3.50 |
| Full Baths | 3 |
| Half Baths | 1 |
| Square Footage | 1,216 |
| Acres | 0.00 |
| Year Built | 1956 |
| Type | Single Family |
| Sub-Type | Detached Single Family |



| | |
|--------|----------|
| Style | Bi-Level |
| Status | Active |

Community Information

| | |
|-------------|---------------------|
| Address | 9809/9811 89 Avenue |
| Area | Edmonton |
| Subdivision | Strathcona |
| City | Edmonton |
| County | ALBERTA |
| Province | AB |
| Postal Code | T6E 2S3 |

Amenities

| | |
|----------------|------------------------|
| Amenities | Detectors Smoke |
| Parking Spaces | 3 |
| Parking | Double Garage Detached |

Interior

| | |
|-------------------|----------------------------------------------------------------------------------------------------------------------------------------------------|
| Interior Features | ensuite bathroom |
| Appliances | Garage Control, Garage Opener, Hood Fan, Microwave Hood Fan, Oven-Microwave, Dryer-Two, Refrigerators-Two, Stoves-Two, Washers-Two, Dishwasher-Two |
| Heating | Forced Air-2, Natural Gas |
| Stories | 2 |
| Has Suite | Yes |
| Has Basement | Yes |
| Basement | Full, Finished |

Exterior

| | |
|-------------------|-----------------------------------------------------------------------------------------------------|
| Exterior | Wood, Vinyl |
| Exterior Features | Back Lane, Flat Site, Landscaped, Park/Reserve, Public Transportation, Shopping Nearby, See Remarks |
| Roof | Asphalt Shingles |
| Construction | Wood, Vinyl |
| Foundation | Concrete Perimeter |

Additional Information

| | |
|----------------|------------------|
| Date Listed | April 25th, 2025 |
| Days on Market | 13 |
| Zoning | Zone 15 |

DATA IS DEEMED RELIABLE BUT IS NOT GUARANTEED ACCURATE BY THE REALTORS® ASSOCIATION OF EDMONTON. COPYRIGHT 2025 BY THE REALTORS® ASSOCIATION OF EDMONTON. ALL RIGHTS RESERVED. Trademarks are owned or controlled by the Canadian Real Estate Association (CREA) and identify real estate professionals who are members of CREA (REALTOR®, REALTORS®) and/or the quality of services they provide (MLS®, Multiple Listing Service®)

Listing information last updated on May 8th, 2025 at 6:47am MDT