

\$265,000 - 426 14808 125 Street, Edmonton

MLS® #E4430202

\$265,000

2 Bedroom, 2.00 Bathroom, 1,059 sqft
Condo / Townhouse on 0.00 Acres

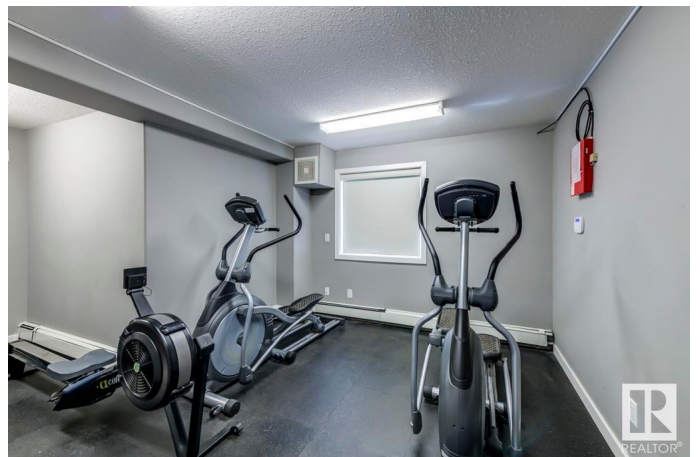
Baranow, Edmonton, AB

Welcome to Pacific Rise on 124 st. A fantastic 10 year old building, ideally located in Baranow. This 2 bed + den +2 full baths and a storage room is situated on the top floor. Gorgeous vaulted ceilings make this unit feel so spacious. 1059 sq ft with a cozy west facing balcony. This upgraded unit has an open concept with higher-end finishings, including stainless appliances and granite counters. The primary bedroom offers a walk-thru closet and 4 piece ensuite. The den is a perfect space for a home office or hobby room - It does have a sprinkler, so could even be used as an additional bedroom. In-suite laundry with full-sized machines. Underground parking. Building hosts a small work out room on the main floor. Plenty of visitor parking. Easy access to Henday. Many restaurants, shopping and public transit nearby. 2 pets per unit, dog < 15â€• at the shoulder.

Built in 2014

Essential Information

MLS® #	E4430202
Price	\$265,000
Bedrooms	2
Bathrooms	2.00
Full Baths	2
Square Footage	1,059



Acres	0.00
Year Built	2014
Type	Condo / Townhouse
Sub-Type	Lowrise Apartment
Style	Single Level Apartment
Status	Active

Community Information

Address	426 14808 125 Street
Area	Edmonton
Subdivision	Baranow
City	Edmonton
County	ALBERTA
Province	AB
Postal Code	T5X 0G1

Amenities

Amenities	Deck, Detectors Smoke, Exercise Room, No Smoking Home, Parking-Visitor, Secured Parking, Sprinkler System-Fire, Storage-In-Suite, Vaulted Ceiling
Parking Spaces	1
Parking	Underground

Interior

Interior Features	ensuite bathroom
Appliances	Dishwasher-Built-In, Dryer, Microwave Hood Fan, Refrigerator, Stove-Electric, Washer, Window Coverings
Heating	Baseboard, Natural Gas
# of Stories	4
Stories	1
Has Basement	Yes
Basement	None, No Basement

Exterior

Exterior	Wood, Stone, Vinyl
Exterior Features	Landscaped, Playground Nearby, Public Transportation, Schools, Shopping Nearby
Roof	Asphalt Shingles
Construction	Wood, Stone, Vinyl

Foundation Concrete Perimeter

Additional Information

Date Listed April 10th, 2025
Days on Market 20
Zoning Zone 27
Condo Fee \$584

DATA IS DEEMED RELIABLE BUT IS NOT GUARANTEED ACCURATE BY THE REALTORS® ASSOCIATION OF EDMONTON. COPYRIGHT 2025 BY THE REALTORS® ASSOCIATION OF EDMONTON. ALL RIGHTS RESERVED.Trademarks are owned or controlled by the Canadian Real Estate Association (CREA) and identify real estate professionals who are members of CREA (REALTOR®, REALTORS®) and/or the quality of services they provide (MLS®, Multiple Listing Service®)
Listing information last updated on April 30th, 2025 at 1:17am MDT