

## \$254,900 - 333 503 Albany Way, Edmonton

MLS® #E4427289

**\$254,900**

2 Bedroom, 2.00 Bathroom, 784 sqft

Condo / Townhouse on 0.00 Acres

Albany, Edmonton, AB

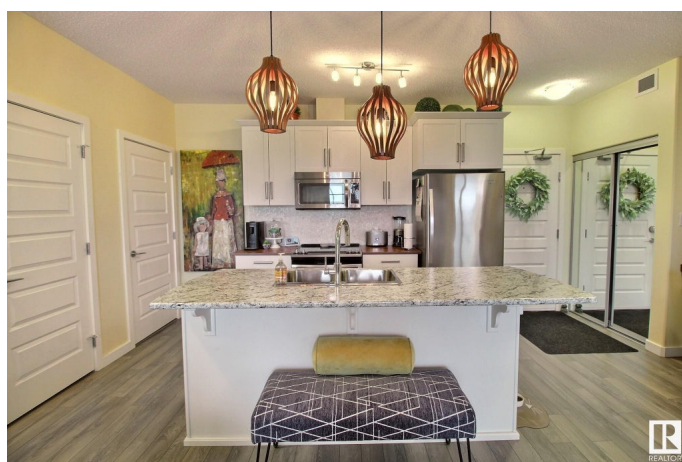
2 bed/2 full baths. 1 heated titled underground parking (stall #173) AND a storage cage in the underground parkade, which is hard to find. Dogs/cats allowed. Stylish condo located in sought after Albany! Upgrades incl herringbone patterned counters, new lighting, quality paint, and carefully curated wallpaper. Entrance has flexible separate desk/office area. Main living is open concept design, w/access to the balcony. SS appliances, plenty of counter & cupboard space, center island/bar counter. Spacious primary fits King suite & features walk through closets w/full ensuite. Other side of the home (separated for privacy) 2nd bedroom & full bath. In-suite laundry w/stacked full sized front load. Building has social room, gym & upgraded security including cameras. Taxes \$2,348/54 per yr. Condo fees: \$374.36 include heat, water, sewer & underground parking. Dogs & cats allowed! Pet Policy: Max 2, no taller than 14" at shoulder. Pet application available. South facing covered deck, natural gas BBQ included.

Built in 2016

### Essential Information

MLS® # E4427289

Price \$254,900



Bedrooms	2
Bathrooms	2.00
Full Baths	2
Square Footage	784
Acres	0.00
Year Built	2016
Type	Condo / Townhouse
Sub-Type	Lowrise Apartment
Style	Single Level Apartment
Status	Active

### **Community Information**

Address	333 503 Albany Way
Area	Edmonton
Subdivision	Albany
City	Edmonton
County	ALBERTA
Province	AB
Postal Code	T6V 0M5

### **Amenities**

Amenities	Exercise Room, Parking-Visitor, Social Rooms
Parking	Underground

### **Interior**

Interior Features	ensuite bathroom
Appliances	Dishwasher-Built-In, Microwave Hood Fan, Refrigerator, Stacked Washer/Dryer, Stove-Electric, Window Coverings
Heating	Baseboard, Natural Gas
# of Stories	4
Stories	1
Has Basement	Yes
Basement	None, No Basement

### **Exterior**

Exterior	Wood, Stucco
Exterior Features	Golf Nearby, Playground Nearby, Schools, Shopping Nearby
Roof	EPDM Membrane
Construction	Wood, Stucco

Foundation                      Concrete Perimeter

**School Information**

Elementary                      Lorelei, St Lucy  
Middle                              M Butterworth, Sir J Thomp  
High                                Ross Shep, Arch O'Leary

**Additional Information**

Date Listed                      March 25th, 2025  
Days on Market                39  
Zoning                              Zone 27  
Condo Fee                        \$350

DATA IS DEEMED RELIABLE BUT IS NOT GUARANTEED ACCURATE BY THE REALTORS® ASSOCIATION OF EDMONTON. COPYRIGHT 2025 BY THE REALTORS® ASSOCIATION OF EDMONTON. ALL RIGHTS RESERVED.Trademarks are owned or controlled by the Canadian Real Estate Association (CREA) and identify real estate professionals who are members of CREA (REALTOR®, REALTORS®) and/or the quality of services they provide (MLS®, Multiple Listing Service®)  
Listing information last updated on May 3rd, 2025 at 2:02am MDT